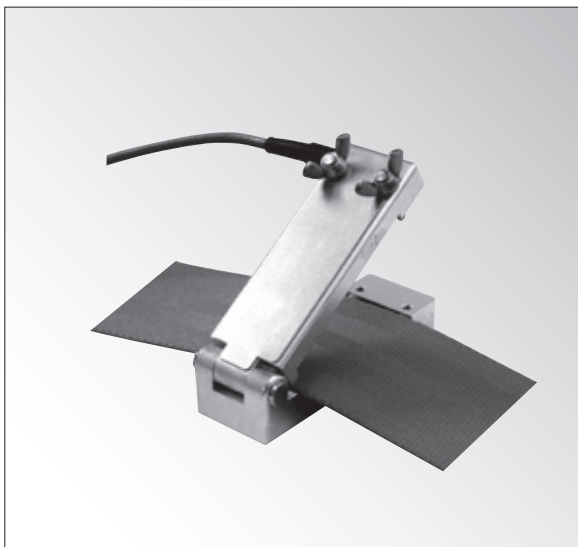


LBT-B-200NSA1-P

Seat Belt Tension Transducer for CRS



Compact, lightweight, and easy to install and remove

Designed to measure the belt tension to fasten the child seat, the LBT-B-200NSA1 is compact, lightweight and designed to be easily attached to, or removed from the belt.

Specifications

Performance

Rated Capacity	200 N
Nonlinearity	Within $\pm 3\%$ RO
Rated Output	Approx. 0.75 mV/V

Environmental Characteristics

Safe Temperature	0 to 60°C
Compensated Temperature	10 to 50°C
Temperature Effect on Zero	Within $\pm 0.1\%$ RO/°C
Temperature Effect on Output	Within $\pm 0.1\%$ /°C

Electrical Characteristics

Safe Excitation	10 VAC or DC
Recommended Excitation	1 to 5 VAC or DC
Input Resistance	120 Ω $\pm 10\%$
Output Resistance	120 Ω $\pm 10\%$
Insulation Resistance	500 M Ω or more (With 25 VDC applied)
Cable	4-conductor (0.08 mm ²) vinyl shielded cable, 3.2 mm diameter by 5 m long, terminated with a connector plug PRC03-12A10-7M (Shield wire is not connected to the case.)

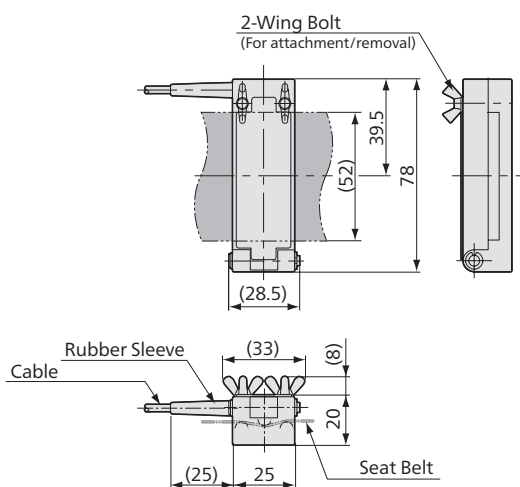
Mechanical Properties

Safe Overloads	150%
Enclosure	Metallic finish
Weight	Approx. 90 g
Material	Aluminum alloy
Others	Not waterproofed. Calibrated using Kyowa standard seat belt.

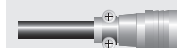
Note) Characteristic values are based on Kyowa calibration method and conditions.

* It is acceptable to calibrate with supplied seat belt.

■ Dimensions



Connector plug
PRC03-12A10-7M



LBT-B-200NSA1-P
Recommended
products for
combination



DIS-5010A
→ 5-40



DIS-7000 Series
→ 5-38



DIS-5210A
→ 5-47

It requires change of the conversion cable or plug.

